

3342: First promising results in younger adult patients (<65 yrs) with newly diagnosed Ph/BCR::ABL positive ALL treated within the randomized GMALL Evolve trial

Fabian Lang¹, Heike Pfeifer¹, Boris Böll², Knut Wendelin³, Andreas Viardot⁴, Andreas Burchert⁵, Georg-Nikolaus Franke⁶, Sonja Martin⁷, Stefan Schwartz⁸, Joerg Westermann⁹, Klaus Wethmar¹⁰, Monika Brüggemann¹¹,
¹Lena Reiser, ¹Thomas Oellerich, ¹Hubert Serve, ¹Nicola Gökbüget

¹Department of Medicine, Hematology and Oncology, Goethe University Frankfurt, Frankfurt, Germany, ²Department I of Internal Medicine, University of Cologne, Faculty of Medicine and University Hospital Cologne, Cologne, Germany, ³Department of Hematology and Medical Oncology, Paracelsus Medical University, Nuremberg, Germany, ⁴Department of Internal Medicine III, University Hospital Ulm, Ulm, Germany, ⁵Department of Hematology, Oncology and Immunology, Philipps University Marburg, and University Medical Center Giessen and Marburg, Marburg, Germany, ⁶University of Leipzig Medical Center, Department for Hematology, Cellular Therapies and Hemostaseology, Leipzig, Germany, ⁷Department of Hematology and Oncology, Robert Bosch Hospital, Stuttgart, Germany, ⁸Department of Hematology, Oncology and Cancer Immunology (Campus Benjamin Franklin), Charité – Universitätsmedizin Berlin, corporate member of Freie Universität and Humboldt-Universität zu Berlin, Berlin, Germany, ⁹Department of Hematology, Oncology and Tumorimmunology, Charité University Medicine Berlin, Campus Virchow Klinikum, Berlin, Germany, ¹⁰Department of Medicine A, University Hospital Münster, Münster, Germany, ¹¹Department of Hematology, University Hospital Schleswig-Holstein, Campus Kiel, Kiel, Germany

AIMS

To evaluate

- Efficacy of Imatinib vs Ponatinib as front-line therapy
- Efficacy of Blinatumomab in molecular failure
- SCT vs Blinatumomab / SCT as consolidation

PATIENTS

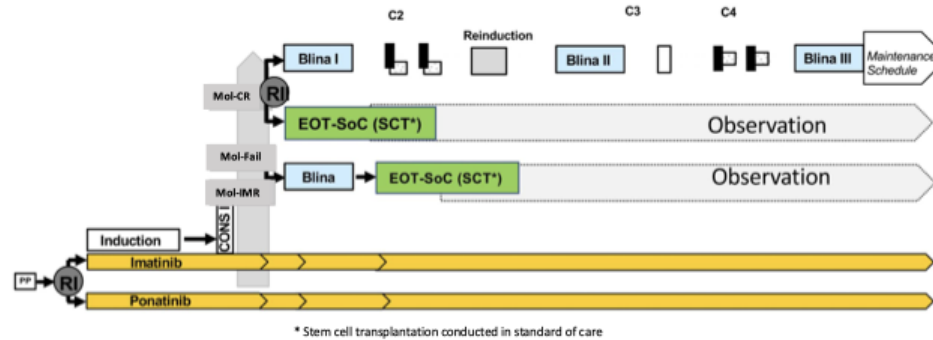
Total	51
Sites	35
Age	46 (19-63)
>55y	36%

The Evolve Trial is an independent academic trial of the Goethe University funded by BMFTR

Reference: Blood (2025) 146 (Supplement 1): 3342.
<https://doi.org/10.1182/blood-2025-3342>

SCHEDULE

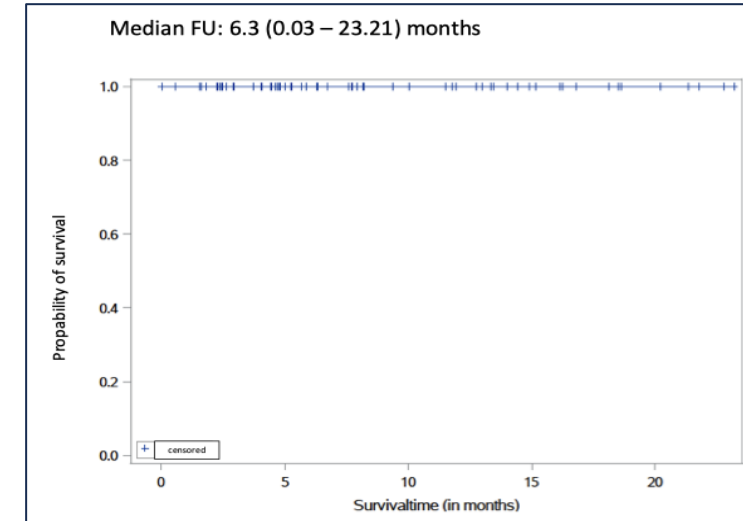
Fig. 1: Randomized Phase II trial in newly diagnosed Ph+ ALL patients <65 years



RESPONSE AFTER CONS1

Evaluable	57
Hematologic CR	100%
Molecular CR	
BCR::ABL1	28%
IG/TC	73%
Combined	46%

OVERALL SURVIVAL



CONTACT

Web: gmallstudien.de
Mail: gmall@em.uni-frankfurt.de